

SZGHTECH

SHENZHEN GUANHONG TECHNOLOGY CO.,LTD

PRODUCT BROCHURE
SERVO MOTOR



深圳贯虹科技有限公司
Shenzhen Guanhong Technology Co.,LTD

Address: 2nd Floor, Building 5, South Digital Innovation Industrial Base, No. 80, PuxiaRoad, Liuyue
Community, Henggang Street, Longgang District, Shenzhen City,Guangdong Province, China

Web: www.szgitech.com

Tel: +86 755 2609 9399

Email: export02@szgitech.com

Moblie: +86 189 2522 3781 (whatsapp&wechat)

www.szgitech.com

COMPANY PROFILE

ShenZhen GuanHong Technology Co.,LTD(short name SZGH, was established on November 19, 2013) is one of the leading Robotic&CNC Automation company in China, SZGH' products have been in working with a wide variety of CNC machinery and automatic processing equipment with high performance and good precision stably. We have now established areliable structure , our experienced engineers and technicians are able to provide professional consultancy and offer you most suitable CNC application solution.

Besides, our products all have passed and got the European safety standards- CE certification.

Over the years, SZGH has gradually shifted from the CNC industry to the research and development of industrial robots, focusing on the research and development of core technologies.

SZGH was awarded as New high-tech enterprise in China since 2018, which rely on Technical Center force to do support, efficient, strict quality management team to guide, software and hardware facilities, first-class service.

There are many agents around the world, such as USA, Romania, Turkey, Russia, Egypt, Morocco, Moldova etc.

Our tenet is Customer First!



SZGH has a strong technical force and has gathered top domestic technical talents. With strong comprehensive strength, we provide efficient and professional CNC systems and related product solutions for our clients. During this period, we obtained more than 100 patents and won many domestic awards.



CONTENTS

Motor Model Naming Method

General Purpose Incremental Servo Motor:

Power range: 0.05KW~7.5KW

Rated voltage: AC220V/380V

Encoder configuration: Incremental encoder.

Design scheme: New electromagnetic design scheme, lower temperature, small motor inertia, better performance.

Application fields: Machining center, metal carving and milling, advanced woodworking engraving, advanced CNC lathes, CNC machine tools, automation, high-end electronic equipment and other fields.

Absolute Encoder Servo Motor:

Power range: 0.05KW~7.5KW

Rated voltage: AC220V/380V

Encoder configuration: Absolute encoder.

Design scheme: Adopt new technology, compact structure, short body, small size.

Application fields: Joint robot, high-end electronic equipment and CNC engraving and milling etc.

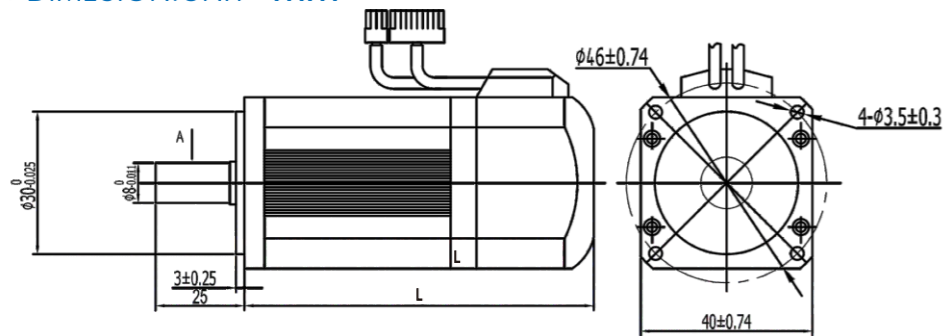
SERVO MOTOR APPLICATIONS



40 SERIES SERVO MOTORS

SZGHTECH

⊙ DIMENSION: UNIT = mm



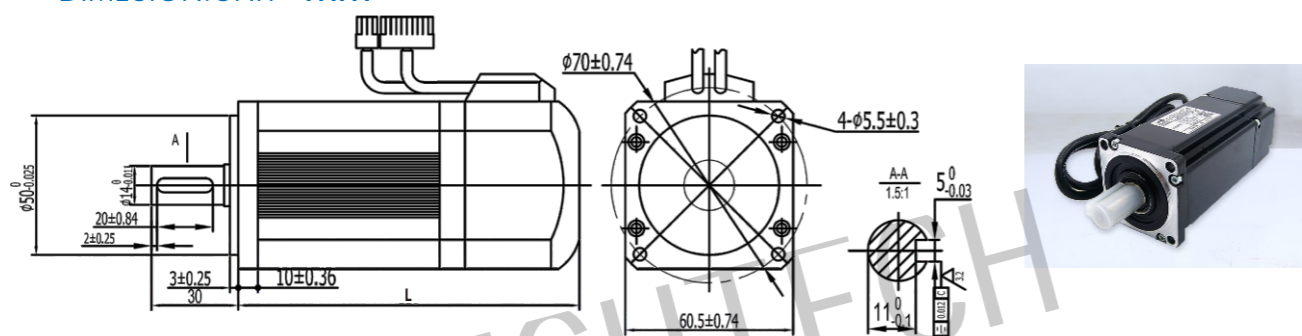
⊙ SPECIFICATIONS

| MOTOR MODEL | SZGH-04005D | SZGH-04010D | SZGH-04005D | SZGH-04010D |
|---|----------------|-------------|-----------------------|-------------|
| Rated Power(KW) | 0.05 | 0.1 | Motor Length(MM) | 75 |
| Rated Voltage(V) | 220 | 220 | Brake Motor(/T)Length | 109 |
| Rated Current(A) | 0.4 | 0.6 | Diameter of Axle(MM) | 8 |
| Rated Speed(RPM) | 3000 | 3000 | Weight(KG) | 0.4 |
| Rated Torque(N.m.) | 0.16 | 0.32 | | |
| Peak Torque(N.m.) | 0.32 | 0.64 | | |
| Rotor Inertia(KG.M ² ×10 ⁻⁴) | 0.025 | 0.051 | | |
| Encoder Resolution | Increment Type | 2500(PPR) | 2500(PPR) | |
| | Absolute Type | 23bit | 23bit | |

60 SERIES SERVO MOTORS

SZGHTECH

⊙ DIMENSION: UNIT = mm



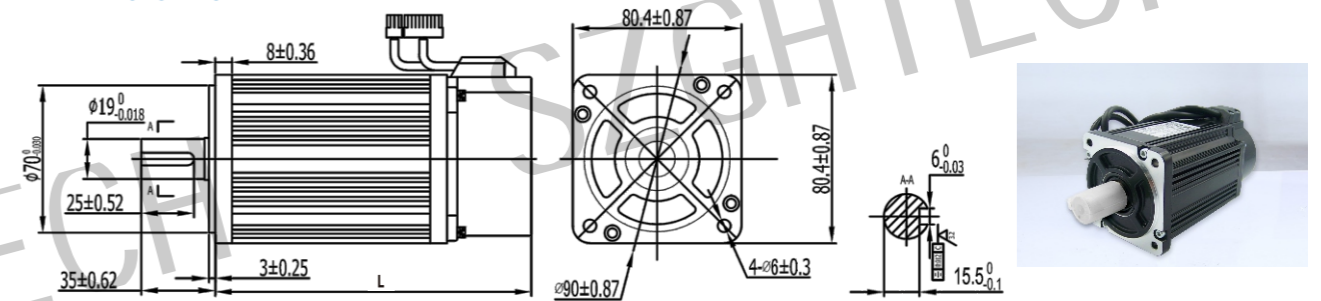
⊙ SPECIFICATIONS

| MOTOR MODEL | SZGH-06020DC | SZGH-06040DC | SZGH-06060DC | SZGH-06020DC | SZGH-06040DC | SZGH-06060DC |
|---|----------------|--------------|--------------|-----------------------|--------------|--------------|
| Rated Power(KW) | 0.2 | 0.4 | 0.6 | Motor Length(MM) | 116 | 141 |
| Rated Voltage(V) | 220 | 220 | 220 | Brake Motor(/T)Length | 154 | 179 |
| Rated Current(A) | 1.2 | 2.8 | 3.5 | Diameter of Axle(MM) | 14 | 14 |
| Rated Speed(RPM) | 3000 | 3000 | 3000 | Weight(KG) | 1.16 | 1.6 |
| Rated Torque(N.m.) | 0.637 | 1.27 | 1.91 | | | |
| Peak Torque(N.m.) | 1.9 | 3.9 | 5.73 | | | |
| Rotor Inertia(KG.M ² ×10 ⁻⁴) | 0.175 | 0.29 | 0.39 | | | |
| Encoder Resolution | Increment Type | 2500(PPR) | 2500(PPR) | 2500(PPR) | | |
| | Absolute Type | 23bit | 23bit | 23bit | | |

80 SERIES SERVO MOTORS

SZGHTECH

⊙ DIMENSION: UNIT = mm



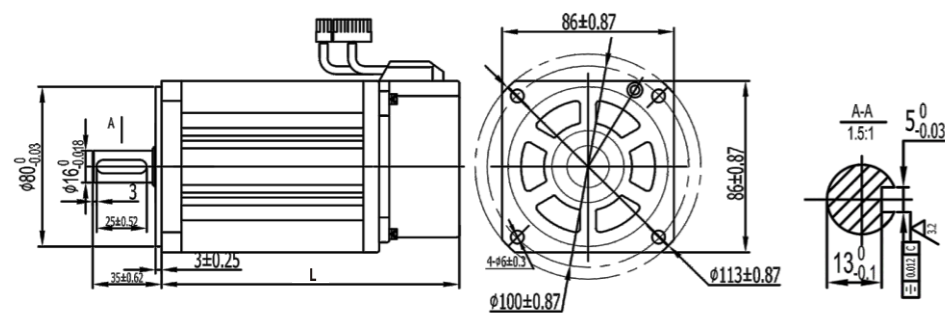
⊙ SPECIFICATIONS

| MOTOR MODEL | SZGH-08075DC | SZGH-08075BC |
|-----------------------------------|--------------------------|--|
| Rated Power(KW) | 0.75 | 0.75 |
| Rated Voltage(V) | 220 | 220 |
| Rated Current(A) | 3 | 3 |
| Rated Speed(RPM) | 3000 | 2000 |
| Rated Torque(N.m.) | 2.4 | 3.5 |
| Peak Torque(N.m.) | 7.1 | 10.5 |
| Peak Current(A) | 9 | 9 |
| Voltage Constant(V/1000r/min) | 48 | 71 |
| Torque coefficient(N.m/A) | 0.8 | 1.17 |
| Rotor Inertia(KG.M ²) | 1.82×10 ⁻⁴ | 2.63×10 ⁻⁴ |
| Line-Line Resistance(Ω) | 2.88 | 3.65 |
| Line-Line Inductance(mH) | 6.4 | 8.8 |
| Electrical Time-Constant(ms) | 2.22 | 2.4 |
| Weight(KG) | 2.9 | 3.9 |
| Motor Length(MM) | 151 | 179 |
| Brake Motor(/T)Length | 191 | 219 |
| Diameter of Axle(MM) | 19 | 19 |
| Encoder Line Number | Increment Type 2500(PPR) | Absolute Type 23bit |
| Insulation Class | ClassF | |
| Incremental Encoder Socket(15PIN) | Signal lead | 5V 0V B Z- U Z U- A V W V- A- B- W- PE |
| | Socket number | 2 3 4 5 6 7 8 9 10 11 12 13 14 15 1 |
| Absolute Encoder Socket(7PIN) | Signal lead | E- E+ SD- 0V SD+ +5V PE |
| | Socket number | 2 3 4 5 6 7 1 |

90 SERIES SERVO MOTORS

SZGHTECH

⊙ DIMENSION:UNIT=mm



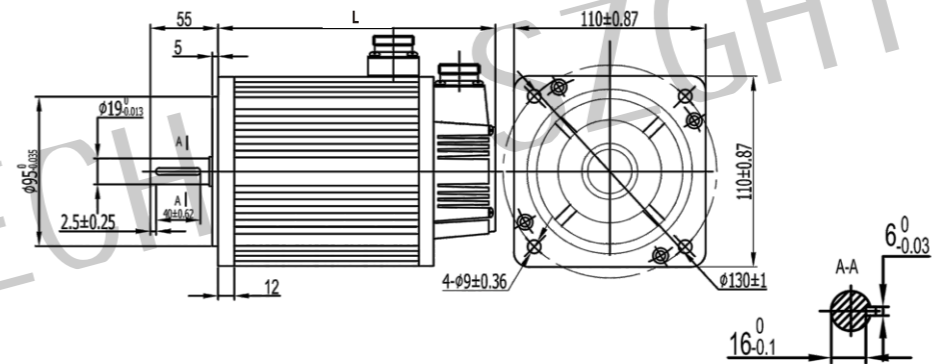
⊙ SPECIFICATIONS

| MOTOR MODEL | SZGH-09075DC | SZGH-09075BC | SZGH-09100CC |
|-----------------------------------|--|--|----------------------|
| Rated Power(KW) | 0.75 | 0.75 | 1.0 |
| Rated Voltage(V) | 220 | 220 | 220 |
| Rated Current(A) | 3 | 3 | 4 |
| Rated Speed(RPM) | 3000 | 2000 | 2500 |
| Rated Torque(N.m.) | 2.4 | 3.5 | 4 |
| Peak Torque(N.m.) | 7.1 | 10.5 | 12 |
| Peak Current(A) | 9 | 9 | 12 |
| Voltage Constant(V/1000r/min) | 51 | 67 | 60 |
| Torque coefficient(N.m/A) | 0.8 | 1.2 | 1.0 |
| Rotor Inertia(KG.M ²) | 2.45x10 ⁻⁴ | 3.4x10 ⁻⁴ | 3.7x10 ⁻⁴ |
| Line-Line Resistance(Ω) | 3.2 | 4.4 | 2.69 |
| Line-Line Inductance(mH) | 7.0 | 9.7 | 6.21 |
| Electrical Time-Constant(ms) | 2.2 | 2.39 | 2.3 |
| Weight(KG) | 3.1 | 3.9 | 4.2 |
| Motor Length(MM) | 150 | 172 | 182 |
| Brake Motor(T)Length | 198 | 220 | 230 |
| Diameter of Axle(MM) | 16 | 16 | 16 |
| Encoder Line Number | Increment Type 2500(PPR) Absolute Type 23bit | | |
| Insulation Class | ClassF | | |
| Incremental Encoder Socket(15PIN) | Signal lead | 5V 0V B Z- U Z U- A V W V- A- B- W- PE | |
| | Socket number | 2 3 4 5 6 7 8 9 10 11 12 13 14 15 1 | |
| Absolute Encoder Socket(7PIN) | Signal lead | E- E+ SD- 0V SD+ +5V PE | |
| | Socket number | 2 3 4 5 6 7 1 | |

110 SERIES SERVO MOTORS

SZGHTECH

⊙ DIMENSION:UNIT=mm



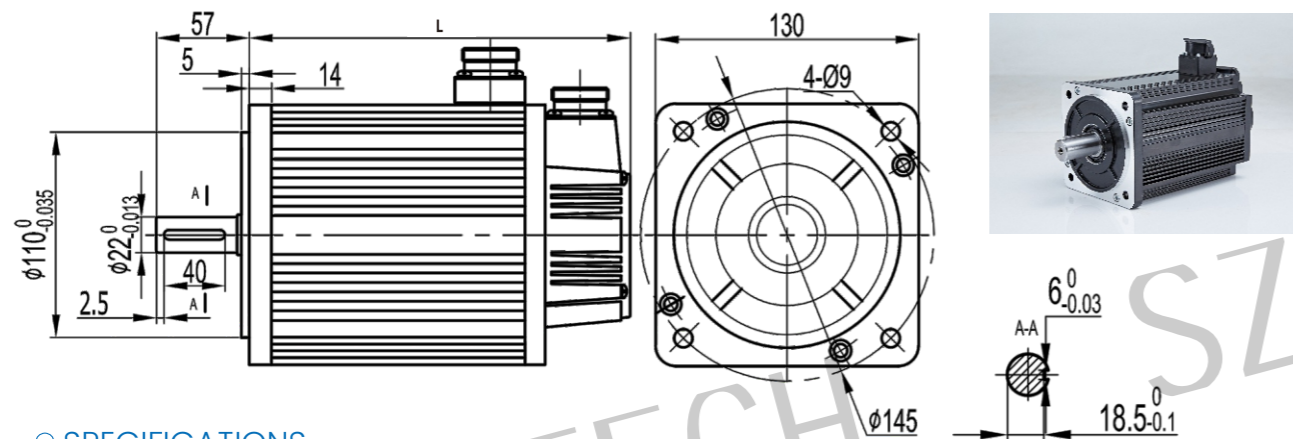
⊙ SPECIFICATIONS

| MOTOR MODEL | SZGH-11060DC | SZGH-11080BC | SZGH-11120DC | SZGH-11120BC | SZGH-11180DC |
|-----------------------------------|--|--|-----------------------|-----------------------|-----------------------|
| Rated Power(KW) | 0.6 | 0.8 | 1.2 | 1.2 | 1.8 |
| Rated Voltage(V) | 220/380 | 220/380 | 220/380 | 220/380 | 220/380 |
| Rated Current(A) | 2.5 | 3.5 | 5.0 | 5.0 | 6.0 |
| Rated Speed(RPM) | 3000 | 2000 | 3000 | 2000 | 3000 |
| Rated Torque(N.m.) | 2 | 4 | 4 | 6 | 6 |
| Peak Torque(N.m.) | 6 | 12 | 12 | 12 | 18 |
| Voltage Constant(V/1000r/min) | 56 | 79 | 54 | 83 | 60 |
| Torque coefficient(N.m/A) | 0.8 | 1.14 | 0.8 | 1.3 | 1.0 |
| Rotor Inertia(KG.M ²) | 0.31x10 ⁻³ | 0.54x10 ⁻³ | 0.54x10 ⁻³ | 0.76x10 ⁻³ | 0.76x10 ⁻³ |
| Line-Line Resistance(Ω) | 3.6 | 2.41 | 1.09 | 1.46 | 0.81 |
| Line-Line Inductance(mH) | 8.32 | 7.3 | 3.3 | 4.7 | 2.59 |
| Electrical Time-Constant(ms) | 2.3 | 3 | 3 | 3.2 | 3.2 |
| Weight(KG) | 4.5 | 6 | 6 | 7.9 | 7.9 |
| Motor Length(MM) | 159 | 189 | 189 | 219 | 219 |
| Brake Motor(T)Length | 233 | 263 | 263 | 293 | 293 |
| Diameter of Axle(MM) | 19 | 19 | 19 | 19 | 19 |
| Encoder Line Number | Increment Type 2500(PPR) Absolute Type 23bit | | | | |
| Insulation Class | ClassF | | | | |
| Incremental Encoder Socket(15PIN) | Signal lead | 5V 0V A+ B+ Z+ A- B- Z- U+ V+ W+ U- V- W- PE | | | |
| | Socket number | 2 3 4 5 6 7 8 9 10 11 12 13 14 15 1 | | | |
| Absolute Encoder Socket(7PIN) | Signal lead | E- E+ SD- 0V SD+ +5V PE | | | |
| | Socket number | 2 3 4 5 6 7 1 | | | |
| Rated Torque(N.m.) | 2 | 4 | 4 | 6 | 6 |

130 SERIES SERVO MOTORS

SZGHTECH

⊙ DIMENSION:UNIT = mm



⊙ SPECIFICATIONS

| MOTOR MODEL | SZGH-13100CC | SZGH-13130CC | SZGH-13150CC | SZGH-13150AC | | | | | | | | | | | | |
|-----------------------------------|--|-----------------------|-----------------------|-----------------------|----|-----|-----|----|----|----|----|----|----|----|----|----|
| Rated Power(KW) | 1.0 | 1.3 | 1.5 | 1.5 | | | | | | | | | | | | |
| Rated Voltage(V) | 220/380 | 220/380 | 220/380 | 220/380 | | | | | | | | | | | | |
| Rated Current(A) | 4.0 | 5.0 | 6.0 | 6.0 | | | | | | | | | | | | |
| Rated Speed(RPM) | 2500 | 2500 | 2500 | 1500 | | | | | | | | | | | | |
| Rated Torque(N.m.) | 4 | 5 | 6 | 10 | | | | | | | | | | | | |
| Peak Torque(N.m.) | 12 | 15 | 18 | 25 | | | | | | | | | | | | |
| Voltage Constant(V/1000r/min) | 72 | 68 | 65 | 103 | | | | | | | | | | | | |
| Torque coefficient(N.m/A) | 1.0 | 1.0 | 1.0 | 1.67 | | | | | | | | | | | | |
| Rotor Inertia(KG.M ²) | 0.85x10 ⁻³ | 1.06x10 ⁻³ | 1.26x10 ⁻³ | 1.94x10 ⁻³ | | | | | | | | | | | | |
| Line-Line Resistance(Ω) | 2.76 | 1.84 | 1.21 | 1.5 | | | | | | | | | | | | |
| Line-Line Inductance(mH) | 6.42 | 4.9 | 3.87 | 4.37 | | | | | | | | | | | | |
| Electrical Time-Constant(ms) | 2.32 | 2.66 | 3.26 | 2.91 | | | | | | | | | | | | |
| Weight(KG) | 6.2 | 6.6 | 7.4 | 11.5 | | | | | | | | | | | | |
| Motor Length(MM) | 166 | 171 | 179 | 213 | | | | | | | | | | | | |
| Brake Motor(/T)Length | 223 | 228 | 236 | 294 | | | | | | | | | | | | |
| Diameter of Axle(MM) | 22 | 22 | 22 | 22 | | | | | | | | | | | | |
| Encoder Line Number | Increment Type 2500(PPR) Absolute Type 23bit | | | | | | | | | | | | | | | |
| Insulation Class | ClassF | | | | | | | | | | | | | | | |
| Incremental Encoder Socket(15PIN) | Signal lead | 5V | 0V | A+ | B+ | Z+ | A- | B- | Z- | U+ | V+ | W+ | U- | V- | W- | PE |
| | Socket number | 2 | 3 | 4 | 5 | 6 | 7 | 8 | 9 | 10 | 11 | 12 | 13 | 14 | 15 | 1 |
| Absolute Encoder Socket(7PIN) | Signal lead | E- | E+ | SD- | 0V | SD+ | +5V | PE | | | | | | | | |
| | Socket number | 2 | 3 | 4 | 5 | 6 | 7 | 1 | | | | | | | | |

130 SERIES SERVO MOTORS

SZGHTECH

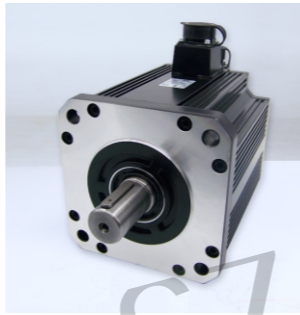
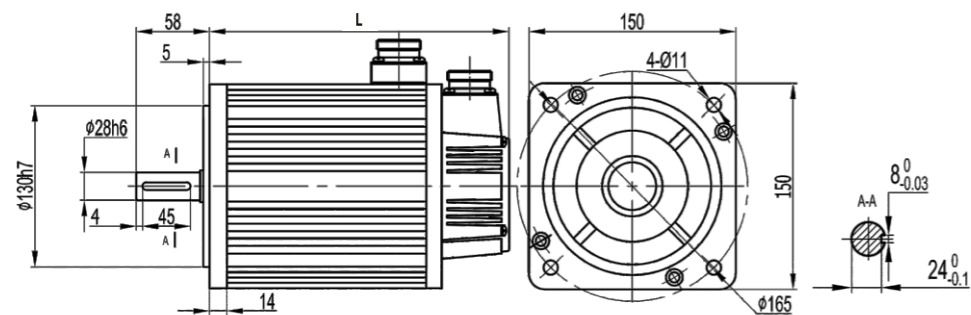
⊙ SPECIFICATIONS

| MOTOR MODEL | SZGH-13200BC | SZGH-13200CC | SZGH-13230AC | SZGH-13260CC | SZGH-13300CC | SZGH-13380CC | | | | | | | | | | |
|-----------------------------------|--|-----------------------|-----------------------|-----------------------|-----------------------|-----------------------|-----|----|----|----|----|----|----|----|----|----|
| Rated Power(KW) | 2.0 | 2.0 | 2.3 | 2.6 | 3.0 | 3.8 | | | | | | | | | | |
| Rated Voltage(V) | 220/380 | 220/380 | 220/380 | 220/380 | 220/380 | 220/380 | | | | | | | | | | |
| Rated Current(A) | 7.8 | 7.5 | 9.5 | 10 | 11.7 | 13.5/10 | | | | | | | | | | |
| Rated Speed(RPM) | 2000 | 2500 | 1500 | 2500 | 2000 | 2500 | | | | | | | | | | |
| Rated Torque(N.m.) | 10 | 7.7 | 15 | 10 | 15 | 15 | | | | | | | | | | |
| Peak Torque(N.m.) | 25 | 22 | 30 | 25 | 30 | 2.45 | | | | | | | | | | |
| Voltage Constant(V/1000r/min) | 84 | 68 | 114 | 70 | 80 | 67 | | | | | | | | | | |
| Torque coefficient(N.m/A) | 1.28 | 1.03 | 1.58 | 1.0 | 1.28 | 1.11 | | | | | | | | | | |
| Rotor Inertia(KG.M ²) | 1.94x10 ⁻³ | 1.53x10 ⁻³ | 2.77x10 ⁻³ | 1.94x10 ⁻³ | 2.77x10 ⁻³ | 2.77x10 ⁻³ | | | | | | | | | | |
| Line-Line Resistance(Ω) | 0.949 | 1.01 | 1.1 | 0.73 | 0.6 | 0.49 | | | | | | | | | | |
| Line-Line Inductance(mH) | 3.2 | 2.94 | 4.45 | 2.45 | 2.24 | 1.68 | | | | | | | | | | |
| Electrical Time-Constant(ms) | 3.4 | 2.91 | 4.05 | 3.36 | 3.73 | 3.43 | | | | | | | | | | |
| Weight(KG) | 7 | 10 | 14.4 | 11.5 | 13.5 | 14.7 | | | | | | | | | | |
| Motor Length(MM) | 213 | 192 | 241 | 209 | 231 | 231 | | | | | | | | | | |
| Brake Motor(/T)Length | 294 | 249 | 322 | 290 | 312 | 312 | | | | | | | | | | |
| Diameter of Axle(MM) | 22 | 22 | 22 | 22 | 22 | 22 | | | | | | | | | | |
| Encoder Line Number | Increment Type 2500(PPR) Absolute Type 23bit | | | | | | | | | | | | | | | |
| Insulation Class | ClassF | | | | | | | | | | | | | | | |
| Incremental Encoder Socket(15PIN) | Signal lead | 5V | 0V | A+ | B+ | Z+ | A- | B- | Z- | U+ | V+ | W+ | U- | V- | W- | PE |
| | Socket number | 2 | 3 | 4 | 5 | 6 | 7 | 8 | 9 | 10 | 11 | 12 | 13 | 14 | 15 | 1 |
| Absolute Encoder Socket(7PIN) | Signal lead | E- | E+ | SD- | 0V | SD+ | +5V | PE | | | | | | | | |
| | Socket number | 2 | 3 | 4 | 5 | 6 | 7 | 1 | | | | | | | | |

150 SERIES SERVO MOTORS

SZGHTECH

⊙ DIMENSION:UNIT=mm



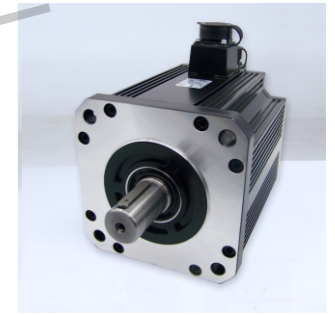
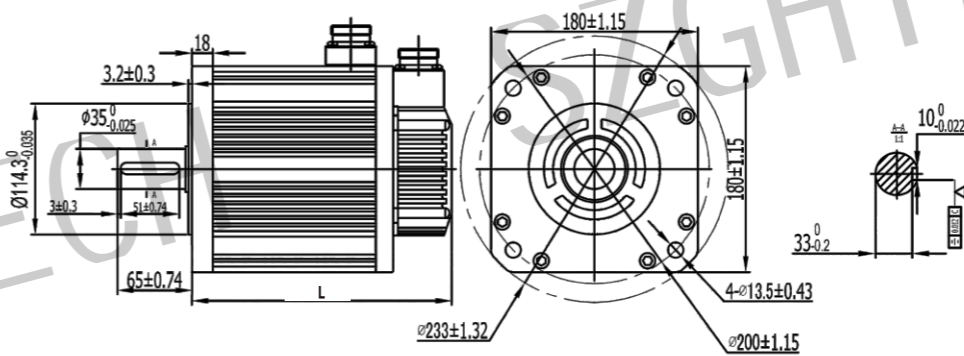
⊙ SPECIFICATIONS

| MOTOR MODEL | SZGH-15360BC | SZGH-15470BC |
|-----------------------------------|---|----------------------|
| Rated Power(KW) | 3.6 | 4.7 |
| Rated Voltage(V) | 220/380 | 220/380 |
| Rated Current(A) | 17/9.5 | 21/12 |
| Rated Speed(RPM) | 2000 | 2000 |
| Rated Torque(N.m.) | 18 | 23 |
| Peak Torque(N.m.) | 36 | 46 |
| Voltage Constant(V/1000r/min) | 71 | 72 |
| Torque coefficient(N.m/A) | 1.05 | 1.09 |
| Rotor Inertia(KG.M ²) | 4.6x10 ⁻³ | 5.8x10 ⁻³ |
| Line-Line Resistance(Ω) | 0.255 | 0.2 |
| Line-Line Inductance(mH) | 1.3 | 1.06 |
| Electrical Time-Constant(ms) | 5.1 | 5.3 |
| Weight(KG) | 17 | 21 |
| Motor Length(MM) | 248 | 248 |
| Brake Motor(T)Length | 321 | 321 |
| Diameter of Axle(MM) | 28 | 28 |
| Encoder Line Number | Increment Type 2500(PPR) Absolute Type 23bit | |
| Insulation Class | ClassF | |
| Incremental Encoder Socket(15PIN) | Signal lead 5V 0V A+ B+ Z+ A- B- Z- U+ V+ W+ U- V- W- PE Socket number 2 3 4 5 6 7 8 9 10 11 12 13 14 15 1 | |
| Absolute Encoder Socket(7PIN) | Signal lead E- E+ SD- 0V SD+ +5V PE Socket number 2 3 4 5 6 7 1 | |

180 SERIES SERVO MOTORS

SZGHTECH

⊙ DIMENSION:UNIT=mm



⊙ SPECIFICATIONS

| MOTOR MODEL | SZGH-18270CC | SZGH-18300CC | SZGH-18450CC | SZGH-18290BC |
|-----------------------------------|---|----------------------|----------------------|----------------------|
| Rated Power(KW) | 2.7 | 3.0 | 4.5 | 2.9 |
| Rated Voltage(V) | 220/380 | 220/380 | 220/380 | 220/380 |
| Rated Current(A) | 10.5 6.5 | 12 7.5 | 16 9.5 | 12 7.5 |
| Rated Speed(RPM) | 1500 | 1500 | 2000 | 1000 |
| Rated Torque(N.m.) | 17.2 | 19 | 21.5 | 27 |
| Peak Torque(N.m.) | 43 | 47 | 53 | 67 |
| Voltage Constant(V/1000r/min) | 112 167 | 97 170 | 84 140 | 138 224 |
| Torque coefficient(N.m/A) | 1.64 2.65 | 1.58 2.5 | 1.34 2.26 | 2.25 3.6 |
| Rotor Inertia(KG.M ²) | 3.4x10 ⁻³ | 3.8x10 ⁻³ | 4.7x10 ⁻³ | 6.1x10 ⁻³ |
| Line-Line Resistance(Ω) | 0.7 1.47 | 0.4 1.23 | 0.24 0.71 | 0.48 1.37 |
| Line-Line Inductance(mH) | 3.5 7.8 | 2.42 7.3 | 1.45 4 | 3.26 8.6 |
| Electrical Time-Constant(ms) | 5 5.3 | 6 5.93 | 6 5.6 | 6.79 6.27 |
| Weight(KG) | 20 | 21 | 22 | 26 |
| Motor Length(MM) | 226 | 232 | 243 | 262 |
| Brake Motor(T)Length | 298 | 304 | 315 | 334 |
| Diameter of Axle(MM) | 35 | 35 | 35 | 35 |
| Encoder Line Number | Increment Type 2500(PPR) Absolute Type 23bit | | | |
| Insulation Class | ClassF | | | |
| Incremental Encoder Socket(15PIN) | Signal lead 5V 0V A+ B+ Z+ A- B- Z- U+ V+ W+ U- V- W- PE Socket number 2 3 4 5 6 7 8 9 10 11 12 13 14 15 1 | | | |
| Absolute Encoder Socket(7PIN) | Signal lead E- E+ SD- 0V SD+ +5V PE Socket number 2 3 4 5 6 7 1 | | | |

180 SERIES SERVO MOTORS

SZGHTECH

◎ SPECIFICATIONS

| MOTOR MODEL | SZGH-18370BC | | SZGH-18430AC | | SZGH-18550CC | | SZGH-18750CC | | | | | | | | | |
|-----------------------------------|--------------------------|------|----------------------|-------|----------------------|------|----------------------|-------|----|----|----|----|----|----|----|----|
| Rated Power(KW) | 3.7 | | 4.3 | | 5.5 | | 7.5 | | | | | | | | | |
| Rated Voltage(V) | 220/380 | | 220/380 | | 220/380 | | 220/380 | | | | | | | | | |
| Rated Current(A) | 16 | 10 | 16 | 10 | 24 | 12 | 32 | 20 | | | | | | | | |
| Rated Speed(RPM) | 1000 | | 1500 | | 1500 | | 1500 | | | | | | | | | |
| Rated Torque(N.m.) | 35 | | 27 | | 35 | | 48 | | | | | | | | | |
| Peak Torque(N.m.) | 70 | | 67 | | 70 | | 96 | | | | | | | | | |
| Voltage Constant(V/1000r/min) | 134 | 223 | 103 | 172 | 90 | 181 | 94 | 156 | | | | | | | | |
| Torque coefficient(N.m/A) | 1.69 | 2.7 | 2.2 | 3.5 | 1.45 | 2.9 | 1.5 | 2.4 | | | | | | | | |
| Rotor Inertia(KG.M ²) | 8.6x10 ⁻³ | | 6.1x10 ⁻³ | | 8.6x10 ⁻³ | | 9.5x10 ⁻³ | | | | | | | | | |
| Line-Line Resistance(Ω) | 0.31 | 0.93 | 0.28 | 0.796 | 0.14 | 0.62 | 0.104 | 0.273 | | | | | | | | |
| Line-Line Inductance(mH) | 2.11 | 5.86 | 1.74 | 4.83 | 1.0 | 4 | 0.77 | 2.14 | | | | | | | | |
| Electrical Time-Constant(ms) | 6.8 | 6.3 | 6.2 | 6 | 7.14 | 6.45 | 7.4 | 7.8 | | | | | | | | |
| Weight(KG) | 31 | | 26 | | 30.5 | | 40 | | | | | | | | | |
| Motor Length(MM) | 292 | | 262 | | 292 | | 346 | | | | | | | | | |
| Brake Motor(T)Length | 364 | | 334 | | 364 | | 418 | | | | | | | | | |
| Diameter of Axle(MM) | 35 | | 35 | | 35 | | 35 | | | | | | | | | |
| Encoder Line Number | Increment Type 2500(PPR) | | | | Absolute Type 23bit | | | | | | | | | | | |
| Insulation Class | ClassF | | | | | | | | | | | | | | | |
| Incremental Encoder Socket(15PIN) | Signal lead | 5V | 0V | A+ | B+ | Z+ | A- | B- | Z- | U+ | V+ | W+ | U- | V- | W- | PE |
| | Socket number | 2 | 3 | 4 | 5 | 6 | 7 | 8 | 9 | 10 | 11 | 12 | 13 | 14 | 15 | 1 |
| Absolute Encoder Socket(7PIN) | Signal lead | E- | E+ | SD- | 0V | SD+ | +5V | PE | | | | | | | | |
| | Socket number | 2 | 3 | 4 | 5 | 6 | 7 | 1 | | | | | | | | |

PROFESSIONAL TEAM



PRODUCT PHOTO

